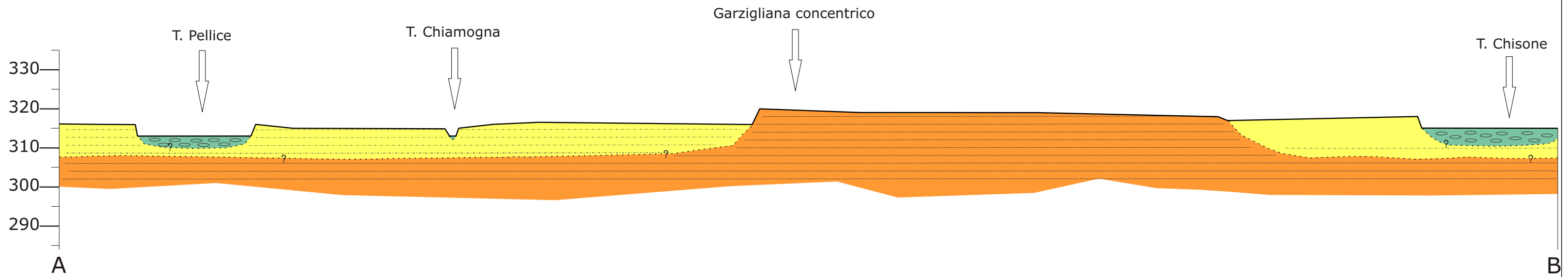


SEZIONI GEOLOGICHE INDICATIVE

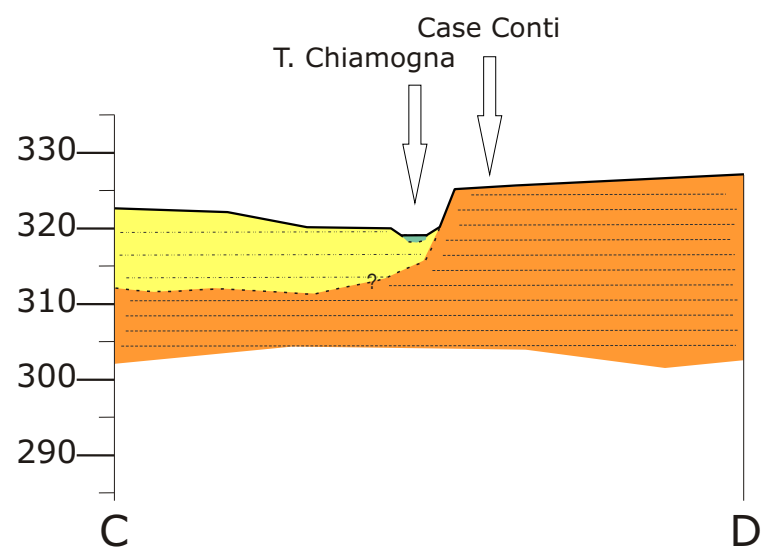
T. PELLICE - T. CHISONE

Scala lunghezza 1: 5.000, scala altezze 1:1.000



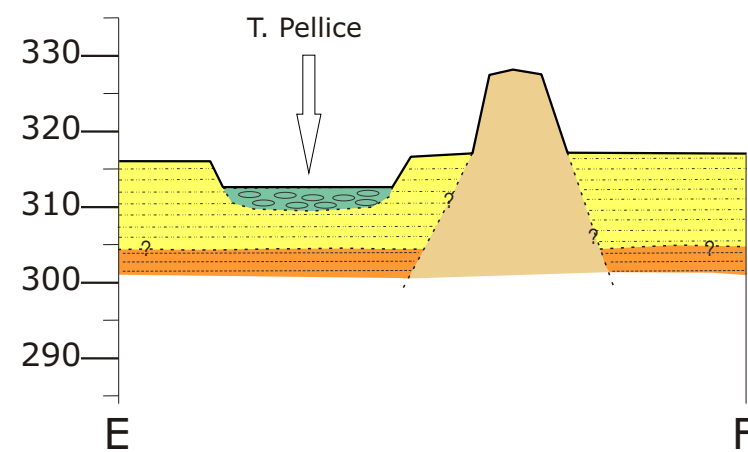
CASE CONTI

Scala lunghezza 1:5.000, scala altezze 1:1.000

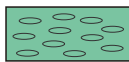
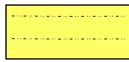





MONTE BRUNO

Scala lunghezza 1:5.000, scala altezze 1:1.000



LEGENDA

-  Depositi alluvionali attuali (Olocene)
-  Depositi alluvionali medio-recenti (Olocene)
-  Depositi alluvionali antichi (Pleistocene sup. - Olocene)
-  Substrato roccioso: gneiss minuti e micascisti del Massiccio cristallino del Dora-Maira
-  Limite incerto